

Doença de Kikuchi: Um Caso Clínico

Kikuchi Disease: A Case Report

Margarida L. Nascimento , Filipa Malheiro , Alexandra Bayão Horta 

Palavras-chave: Linfadenite Histiocítica Necrosante/diagnosis.

Keywords: *Histiocytic Necrotizing Lymphadenitis/diagnosis.*

A 30-year-old woman came to Internal Medicine consultation because of low grade fever, a slightly pruritic skin rash and a left submandibular mass that had been lasting for a week. She reported a recurrent cervical painful mass that had resolved spontaneously during the previous year. She was a tobacco smoker and had no other complaints such as rhinorrhea,odynophagia, otalgia, odontalgia, or other symptoms of head and neck infection. On examination a painful tender cervical mass (Fig. 1A) was noted as well as painful homolateral axillary lymphadenopathy. The erythematous skin rash lasted for a few days and was most noticeable on the trunk and upper limbs (Fig. 1B).

The laboratory evaluation was unremarkable, including negative antinuclear antibodies, except for a slightly elevated erythrocyte sedimentation rate (35 mm/h) and elevated serum lactate dehydrogenase (445 U/L, reference range: 81-234 U/L). A neck and thorax computed tomography showed enlarged lymph nodes in the lateral cervical chains and left axilla,

the biggest ones on the left submandibular region (2x2 cm in diameter).

A lymph node biopsy was performed. Microscopic examination showed paracortical foci with necrosis, cellular debris, and a histiocytic cellular infiltrate with absence of neutrophils (Fig. 2). Kikuchi disease was admitted, and the patient was successfully treated with ibuprofen and hydroxychloroquine according to her preference and has remained well since then.

Kikuchi disease is a rare, benign, self-limiting condition of unknown cause usually characterized by cervical lymphadenopathy and fever.¹ The diagnosis is made by lymph node biopsy. No effective treatment has been defined but signs and symptoms usually resolve within a few months.² Patients should be followed for some years because systemic lupus erythematosus can develop, and recurrences can also occasionally occur.³ ■

Declaração de Contribuição

MLN – Desenho e elaboração do artigo, redação do manuscrito e revisão da literatura.

FM, ABH – Revisão crítica do conteúdo e integração de todo o trabalho
Todos os autores aprovaram a versão final a ser submetida



Figure 1: A - Painful tender left cervical mass; B - Erythematous skin rash.

Serviço de Medicina Interna, Hospital da Luz Lisboa, Lisboa, Portugal

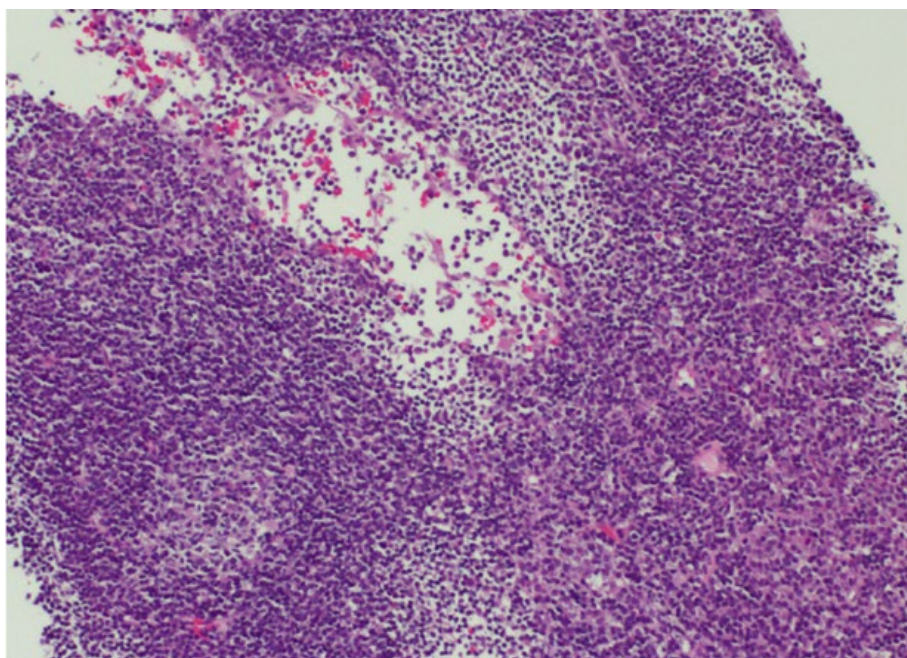


Figure 2: Lymph node biopsy.

Contributorship Statement

MLN – Article design and drafting, manuscript writing and literature review.
FM, ABH – Critical review of content and integration of all work.
All authors approved the final draft

Responsabilidades Éticas

Conflitos de Interesse: Os autores declaram a inexistência de conflitos de interesse na realização do presente trabalho.

Fontes de Financiamento: Não existiram fontes externas de financiamento para a realização deste artigo.

Confidencialidade dos Dados: Os autores declaram ter seguido os protocolos da sua instituição acerca da publicação dos dados de doentes.

Consentimento: Consentimento do doente para publicação obtido.

Proveniência e Revisão por Pares: Não comissionado; revisão externa por pares.

Ethical Disclosures

Conflicts of interest: The authors have no conflicts of interest to declare.

Financing Support: This work has not received any contribution, grant or scholarship

Confidentiality of Data: The authors declare that they have followed the protocols of their work center on the publication of data from patients.

Patient Consent: Consent for publication was obtained.

Provenance and Peer Review: Not commissioned; externally peer reviewed.

© Autor (es) (ou seu (s) empregador (es)) e SPMI Case Reports 2023. Reutilização permitida de acordo com CC BY. Nenhuma reutilização comercial.

© Author(s) (or their employer(s)) and SPMI Case Reports 2023. Re-use permitted under CC BY. No commercial re-use.

Correspondence / Correspondência:

Margarida L. Nascimento - margarida.leitao.nascimento@gmail.com
Serviço de Medicina Interna, Hospital da Luz Lisboa, Lisboa, Portugal
Av. Lusíada 100, 1500-650 Lisboa

Recebido / Received: 2023/01/12

Aceite / Accepted: 2023/01/31

Publicado online / Published online: 2023/05/31

REFERÊNCIAS

1. Parappil A, Rifaath AA, Doi SA, Pathan E, Surrin SK. Pyrexia of unknown origin: Kikuchi-Fujimoto disease. *Clin Infect Dis.* 2004;39:138-43. doi: 10.1086/421267.
2. Honda F, Tsuboi H, Toko H, Ohyama A, Takahashi H, Abe S, et al. Recurrent Kikuchi-Fujimoto Disease Successfully Treated by the Concomitant Use of Hydroxychloroquine and Corticosteroids. *Intern Med.* 2017;56:3373-7. doi: 10.2169/internalmedicine.9205-17.
3. Song JY, Lee J, Park DW, Sohn JW, Suh SI, Kim IS, et al. Clinical outcome and predictive factors of recurrence among patients with Kikuchi's disease. *Int J Infect Dis.* 2009;13:322-6. doi: 10.1016/j.ijid.2008.06.022.